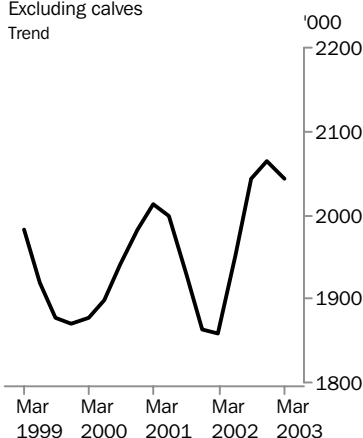




LIVESTOCK PRODUCTS AUSTRALIA

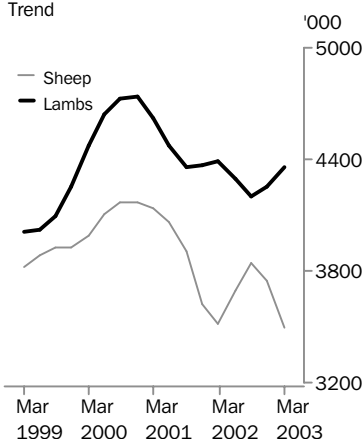
EMBARGO: 11:30AM (CANBERRA TIME) FRI 16 MAY 2003

Cattle slaughterings

Excluding calves
Trend

Sheep and lamb slaughterings

Trend



MARCH QTR KEY FIGURES

TREND ESTIMATES

	Mar Qtr 2002 '000	Dec Qtr 2002 '000	Mar Qtr 2003 '000
Number slaughtered			
Cattle	1 859.6	2 065.3	2 042.3
Calves	245.1	300.3	326.0
Sheep	3 515.5	3 748.0	3 494.6
Lambs	4 391.3	4 256.4	4 356.6
Pigs	1 370.1	1 430.8	1 447.2
Chickens	106 146.5	105 470.9	103 915.7

	Mar Qtr 2002 tonnes	Dec Qtr 2002 tonnes	Mar Qtr 2003 tonnes
Meat produced			
Beef	486 656	521 301	506 939
Veal	8 213	9 421	10 455
Mutton	72 217	73 414	67 871
Lamb	88 399	82 415	84 111
Pig meat	99 860	104 609	106 550
Chicken meat	170 674	175 001	173 326
Wool receivals	137 162	130 576	126 990

	Dec Qtr 2001 ML	Sep Qtr 2002 ML	Dec Qtr 2002 ML
Whole milk intake by factories	2 812	2 788	2 651

MARCH QTR KEY POINTS

TREND ESTIMATES

- The trend estimate for the number of cattle slaughtered in March quarter 2003 fell by 1% to 2.0 million. The trend estimate for the number of calves slaughtered rose by 9% to 326,000, the sixth consecutive quarterly increase and the highest quarterly trend estimate since December quarter 1997.
- In March quarter 2003, the trend estimate for the number of sheep slaughtered fell by 7% to 3.5 million, the lowest quarterly trend estimate since June quarter 1989. Lamb slaughter numbers rose by 2% to 4.4 million
- The trend estimate for the number of pigs slaughtered in March quarter 2003 increased for the ninth consecutive quarter to a record 1.4 million.

- For further information about these and related statistics, contact Frank Costin on Hobart 03 6222 5838, or the National Information and Referral Service on 1300 135 070.

NOTES

FORTHCOMING ISSUES

ISSUE (Quarter)

RELEASE DATE

June 2003

11 August 2003

September 2003

11 November 2003



CHANGES IN THIS ISSUE

There are no changes in this issue.

FORTHCOMING CHANGES

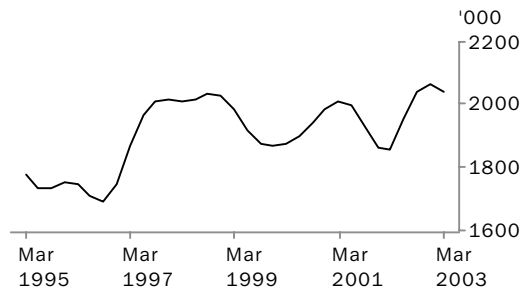
There are no forthcoming changes.



Dennis Trewin
Australian Statistician

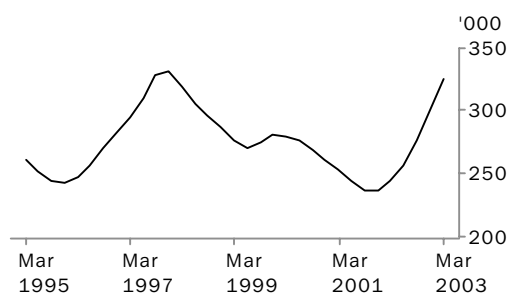
LIVESTOCK SLAUGHTERED: Trend

CATTLE (EXCLUDING CALVES)



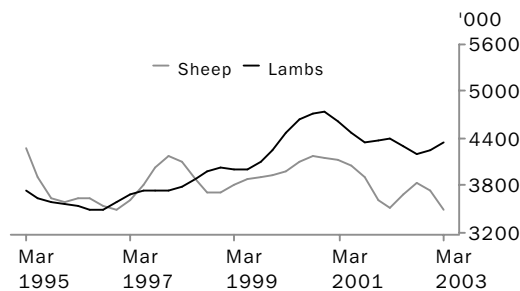
The trend estimate for the number of cattle slaughtered in March quarter 2003 fell by 1% to 2.0 million, with rains allowing producers to hold on to stock.

CALVES



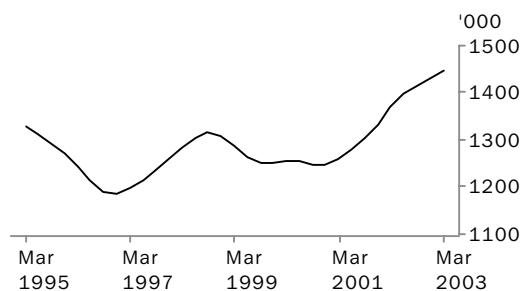
The trend estimate for the number of calves slaughtered in March quarter 2003 was 326,000, up by 9% on the previous quarter and the highest quarterly estimate since December quarter 1997.

SHEEP AND LAMBS



The trend estimate for the number of sheep slaughtered in March quarter 2003 was 3.5 million, down by 7% on the previous quarter. Rains enabled graziers to hold on to stock. The trend estimate for the number of lambs slaughtered increased by 2% to 4.4 million.

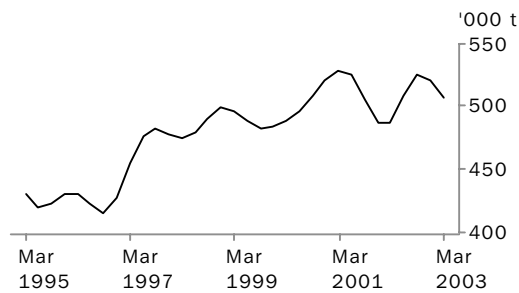
PIGS



The trend estimate for the number of pigs slaughtered in March quarter 2003 increased by 1% to a record 1.4 million. High levels of slaughtering were sustained by the continued pressure from increased feed costs as a result of the drought.

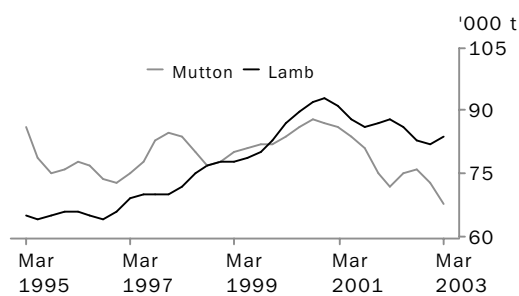
MEAT PRODUCTION: Trend

BEEF



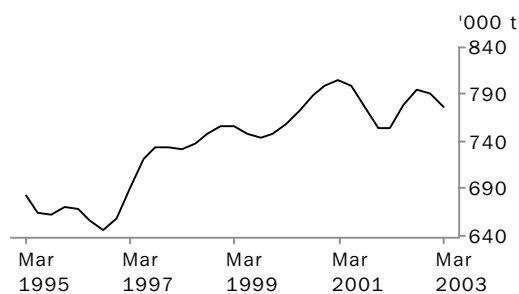
The trend estimate for beef production fell by 3% to 507,000 tonnes in March quarter 2003, as numbers of cattle slaughtered fell, and average slaughter weights declined due to the drought.

MUTTON AND LAMB



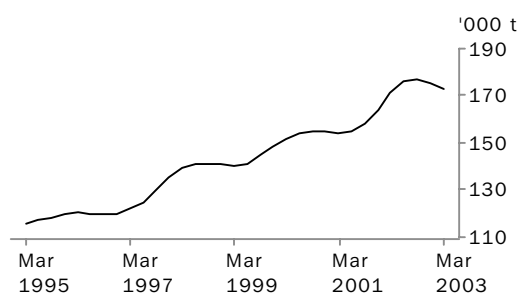
The trend estimate for mutton production fell by 8% to 67,900 tonnes in March quarter 2003. The trend estimate for lamb production rose by 2% to 84,100 tonnes.

TOTAL RED MEAT



The trend estimate for total red meat production fell by 2% to 776,000 tonnes in March quarter 2003. Decreases in beef and mutton production were only partly offset by increases in veal, lamb and pig meat production.

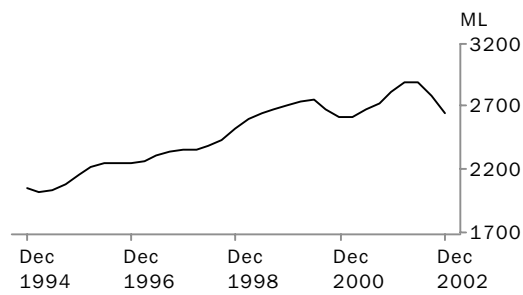
CHICKEN MEAT



The trend estimate for chicken meat production in March quarter 2003 fell by 1% to 173,000 tonnes. High feed grain costs impacted on levels of production.

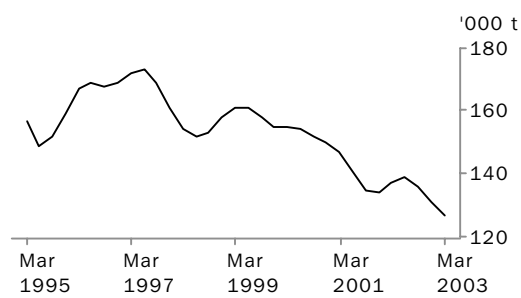
LIVESTOCK PRODUCTS: Trend

WHOLE MILK INTAKE BY FACTORIES



The trend estimate for whole milk intake by factories fell by 5% to 2.7 billion litres in December quarter 2002, as the continuing drought reduced milk production.

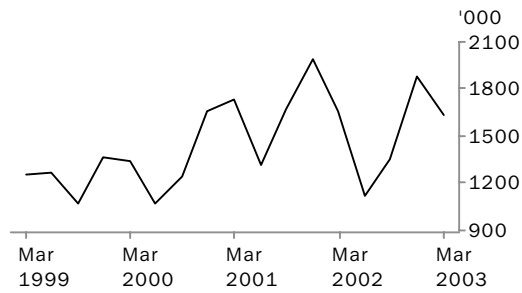
BROKERS AND DEALERS RECEIVALS OF TAXABLE WOOL



The trend estimate for wool receivals by brokers and dealers fell by 3% in March quarter 2002, to 127,000 tonnes. Poor returns and low demand for high quality wool reduced the level of wool receivals.

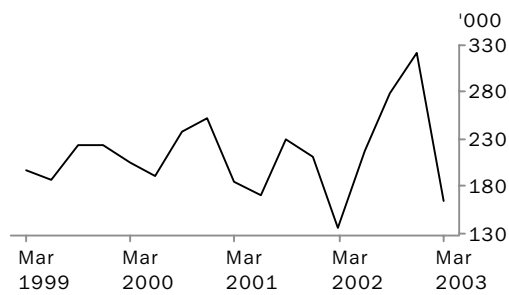
LIVESTOCK EXPORTS: Original

EXPORTS OF LIVE SHEEP



Live sheep exports fell by 13% to 1.6 million in March quarter 2003 due mainly to tight local supplies, lower demand from Middle Eastern markets and increased competition from other suppliers. Gross value of live sheep exports fell by 8% to \$115 million. Unit value increased to \$70.72.

EXPORTS OF LIVE CATTLE



Live cattle exports fell by 49% to 165,000 in March quarter 2003, down from the record levels reported in the previous two quarters. Gross value of live cattle exports fell to \$57.3 million. Unit value remained steady at \$595.21.

LIVESTOCK SLAUGHTERED, Australia(a): All Series

Quarter	Bulls, bullocks and steers	Cows and heifers	Total cattle (excluding calves)	Calves	Sheep	Lambs	Pigs	Chickens
	'000	'000	'000	'000	'000	'000	'000	'000
ORIGINAL								
2001								
December	984.2	801.8	1 786.0	149.3	3 862.6	4 680.7	1 321.6	104 660.4
2002								
March	884.8	836.0	1 720.9	117.7	3 867.6	4 257.1	1 307.6	106 854.7
June	1 038.0	1 049.9	2 087.9	236.4	3 234.1	4 349.9	1 462.0	107 212.4
September	1 056.0	1 021.6	2 077.7	538.1	3 692.6	4 040.0	1 439.5	105 278.6
December	1 065.2	1 017.1	2 082.3	189.1	4 078.8	4 438.8	1 393.7	108 860.1
2003								
March	941.4	950.5	1 891.9	157.6	3 614.5	4 307.7	1 406.9	103 360.2
SEASONALLY ADJUSTED								
2001								
December	964.3	860.3	1 824.6	233.7	3 621.2	4 538.5	1 331.7	101 230.1
2002								
March	929.5	869.7	1 799.2	250.5	3 427.0	4 405.7	1 359.4	107 501.3
June	1 048.5	958.1	2 006.6	256.3	3 519.9	4 390.2	1 407.7	108 811.9
September	1 017.4	1 009.6	2 027.0	272.9	4 154.8	3 982.0	1 433.4	106 737.7
December	1 043.1	1 091.9	2 134.9	297.2	3 830.4	4 309.7	1 396.2	105 336.0
2003								
March	990.1	982.5	1 972.6	334.7	3 204.5	4 459.5	1 471.3	103 929.7
TREND ESTIMATES								
2001								
December	984.7	877.6	1 862.3	237.0	3 618.7	4 370.9	1 333.9	102 307.1
2002								
March	972.6	887.0	1 859.6	245.1	3 515.5	4 391.3	1 370.1	106 146.5
June	1 002.2	950.0	1 952.1	257.3	3 698.3	4 294.3	1 397.7	108 063.8
September	1 029.4	1 013.0	2 042.4	276.1	3 838.2	4 201.6	1 416.0	107 182.2
December	1 026.5	1 038.9	2 065.3	300.3	3 748.0	4 256.4	1 430.8	105 470.9
2003								
March	1 007.8	1 034.5	2 042.3	326.0	3 494.6	4 356.6	1 447.2	103 915.7

(a) For more information refer to paragraphs 5 to 9 of the Explanatory Notes.

LIVESTOCK PRODUCTS, Australia(a): All Series

RED MEAT.....

Quarter	Beef	Veal	Mutton	Lamb	Pig meat	Total red meat	Chicken meat	Whole milk intake by factories	Brokers and dealers receipts of taxable wool
	tonnes	tonnes	tonnes	tonnes	tonnes	tonnes	tonnes	ML	tonnes
ORIGINAL									
2001									
December	468 951	5 475	82 174	92 407	95 401	744 408	166 416	3 775	150 990
2002									
March	450 941	5 977	78 455	85 996	94 360	715 729	169 187	2 829	137 669
June	541 710	8 336	63 379	88 842	107 563	809 830	176 257	2 072	97 519
September	534 915	15 146	73 819	77 861	105 343	807 084	175 634	2 580	155 305
December	527 190	5 526	81 076	84 944	100 008	798 744	178 450	3 612	160 987
2003									
March	472 884	8 594	69 589	85 222	103 104	739 394	171 463	n.y.a.	112 600
SEASONALLY ADJUSTED									
2001									
December	475 706	7 279	75 342	90 082	97 329	745 738	161 053	2 734	126 557
2002									
March	467 906	8 414	70 194	88 078	99 441	734 033	171 851	2 897	151 061
June	528 266	8 453	70 922	90 916	101 593	800 150	176 994	3 058	131 229
September	521 406	9 761	83 213	76 134	104 116	794 630	178 091	2 686	136 887
December	534 785	7 359	73 538	82 937	102 043	800 662	172 837	2 623	135 334
2003									
March	491 064	12 081	63 086	87 266	108 614	762 111	173 925	n.y.a.	120 581
TREND									
2001									
December	487 801	7 590	75 102	86 970	97 716	755 179	163 674	2 812	134 324
2002									
March	486 656	8 213	72 217	88 399	99 860	755 345	170 674	2 895	137 162
June	508 405	8 534	74 560	86 139	101 334	778 972	175 886	2 896	139 039
September	524 754	8 803	76 109	82 643	102 899	795 208	176 568	2 788	135 738
December	521 301	9 421	73 414	82 415	104 609	791 160	175 001	2 651	130 576
2003									
March	506 939	10 455	67 871	84 111	106 550	775 926	173 326	n.y.a.	126 990

(a) For more information refer to paragraphs 5 to 9 and 13 to 15 of the Explanatory Notes.

NUMBER OF LIVESTOCK SLAUGHTERED(a), Bulls, Bullocks and Steers: All Series

	<i>New South Wales</i>	<i>Victoria</i>	<i>Queensland</i>	<i>South Australia</i>	<i>Western Australia</i>	<i>Tasmania</i>	<i>Australia</i>
<i>Quarter</i>	'000	'000	'000	'000	'000	'000	'000
ORIGINAL							
2001							
December	189.9	170.7	523.1	46.0	34.9	19.3	984.2
2002							
March	206.4	171.1	397.7	51.6	34.6	23.2	884.8
June	216.5	150.1	566.0	47.4	36.9	20.9	1 038.0
September	233.1	135.2	591.1	38.1	39.0	19.2	1 056.0
December	261.8	168.4	517.5	42.9	55.5	18.9	1 065.2
2003							
March	247.8	172.1	408.4	46.6	43.0	23.2	941.4
SEASONALLY ADJUSTED							
2001							
December	193.2	163.2	521.7	41.8	28.6	20.3	964.3
2002							
March	204.9	153.9	465.8	48.0	37.2	20.3	929.5
June	220.1	159.2	553.2	50.6	40.0	20.0	1 048.5
September	227.1	152.7	528.0	42.8	42.2	22.1	1 017.4
December	266.5	159.2	515.2	39.2	44.3	20.0	1 043.1
2003							
March	243.3	156.4	479.0	43.3	47.6	20.4	990.1
TREND ESTIMATES							
2001							
December	199.4	158.2	528.1	43.8	32.8	19.7	984.7
2002							
March	203.7	157.9	508.3	47.0	34.7	20.4	972.6
June	218.5	156.4	518.1	47.3	39.3	20.7	1 002.2
September	235.9	156.1	527.0	44.4	42.5	20.8	1 029.4
December	248.4	156.8	513.5	41.7	44.7	20.7	1 026.5
2003							
March	255.4	156.9	488.5	40.8	46.8	20.4	1 007.8

(a) For more information refer to paragraph 4 of the Explanatory Notes.

NUMBER OF LIVESTOCK SLAUGHTERED(a), Cows and Heifers: All Series

	<i>New South Wales</i>	<i>Victoria</i>	<i>Queensland</i>	<i>South Australia</i>	<i>Western Australia</i>	<i>Tasmania</i>	<i>Australia</i>
<i>Quarter</i>	'000	'000	'000	'000	'000	'000	'000
ORIGINAL							
2001							
December	237.8	193.8	262.0	35.0	54.2	17.9	801.8
2002							
March	240.6	195.8	282.3	38.9	60.9	16.4	836.0
June	281.0	216.9	424.9	41.6	53.9	30.4	1 049.9
September	246.6	249.0	412.6	41.9	56.7	13.8	1 021.6
December	249.1	267.4	352.0	50.5	68.8	28.3	1 017.1
2003							
March	238.2	247.7	308.9	49.2	71.5	33.9	950.5
SEASONALLY ADJUSTED							
2001							
December	250.5	190.6	303.4	37.2	50.8	19.9	860.3
2002							
March	240.3	191.2	320.9	36.8	59.3	15.0	869.7
June	262.7	212.4	361.8	39.3	58.3	24.0	958.1
September	255.0	264.7	381.7	44.3	57.7	18.6	1 009.6
December	255.0	263.3	407.1	53.8	64.5	31.5	1 091.9
2003							
March	245.2	242.0	351.3	46.5	69.8	31.0	982.5
TREND ESTIMATES							
2001							
December	245.2	191.2	325.7	36.6	57.0	18.6	877.6
2002							
March	248.1	197.0	327.8	37.4	56.2	18.1	887.0
June	255.0	221.9	355.3	40.5	57.4	19.8	950.0
September	256.2	247.1	381.3	45.3	60.4	23.6	1 013.0
December	253.4	257.9	385.1	48.9	63.9	27.9	1 038.9
2003							
March	247.4	256.6	375.6	50.0	67.8	31.3	1 034.5

(a) For more information refer to paragraph 4 of the Explanatory Notes.

NUMBER OF LIVESTOCK SLAUGHTERED(a), Total Cattle (excluding Calves): All Series

	<i>New South Wales</i>	<i>Victoria</i>	<i>Queensland</i>	<i>South Australia</i>	<i>Western Australia</i>	<i>Tasmania</i>	<i>Australia</i>
<i>Quarter</i>	'000	'000	'000	'000	'000	'000	'000
ORIGINAL							
2001							
December	427.7	364.5	785.1	81.0	89.0	37.2	1 786.0
2002							
March	447.0	367.0	680.0	90.4	95.5	39.6	1 720.9
June	497.5	367.0	990.9	88.9	90.8	51.3	2 087.9
September	479.7	384.2	1 003.7	80.1	95.7	32.9	2 077.7
December	510.9	435.7	869.5	93.4	124.3	47.2	2 082.3
2003							
March	486.0	419.8	717.3	95.8	114.5	57.2	1 891.9
SEASONALLY ADJUSTED							
2001							
December	443.7	353.8	825.1	79.0	79.4	40.2	1 824.6
2002							
March	445.2	345.2	786.7	84.7	96.5	35.3	1 799.2
June	482.8	371.7	915.0	89.9	98.2	44.1	2 006.6
September	482.1	417.4	909.7	87.1	99.9	40.7	2 027.0
December	521.5	422.5	922.3	92.9	108.8	51.5	2 134.9
2003							
March	488.5	398.4	830.3	89.8	117.3	51.3	1 972.6
TREND ESTIMATES							
2001							
December	444.6	349.4	853.8	80.5	89.8	38.3	1 862.3
2002							
March	451.8	354.9	836.1	84.4	90.9	38.5	1 859.6
June	473.5	378.3	873.4	87.8	96.7	40.5	1 952.1
September	492.1	403.1	908.3	89.7	102.9	44.4	2 042.4
December	501.8	414.7	898.6	90.5	108.6	48.6	2 065.3
2003							
March	502.8	413.5	864.1	90.8	114.5	51.7	2 042.3

(a) For more information refer to paragraph 4 of the Explanatory Notes.

NUMBER OF LIVESTOCK SLAUGHTERED(a), Calves: All Series

	<i>New South Wales</i>	<i>Victoria</i>	<i>Queensland</i>	<i>South Australia</i>	<i>Western Australia</i>	<i>Tasmania</i>	<i>Australia</i>
<i>Quarter</i>	'000	'000	'000	'000	'000	'000	'000
ORIGINAL							
2001							
December	39.7	78.9	20.5	1.8	1.8	6.4	149.3
2002							
March	57.1	31.1	25.5	2.2	1.3	0.5	117.7
June	63.2	139.6	27.5	2.8	1.2	1.9	236.4
September	66.2	413.4	23.2	3.3	1.3	30.4	538.1
December	30.1	127.1	21.1	2.4	1.4	6.8	189.1
2003							
March	83.4	44.5	24.7	2.4	1.3	1.1	157.6
SEASONALLY ADJUSTED							
2001							
December	45.2	157.1	22.0	2.5	1.7	11.3	233.7
2002							
March	54.5	174.5	26.2	2.4	1.4	7.0	250.5
June	57.4	160.4	25.6	2.5	1.2	6.9	256.3
September	68.3	168.5	22.7	2.6	1.3	9.8	272.9
December	34.4	255.1	22.7	3.4	1.3	12.1	297.2
2003							
March	79.4	248.3	25.4	2.7	1.3	16.7	334.7
TREND ESTIMATES							
2001							
December	47.6	157.5	24.4	2.4	1.6	9.8	237.0
2002							
March	54.2	159.9	24.5	2.4	1.4	8.2	245.1
June	57.0	168.2	24.6	2.5	1.3	7.5	257.3
September	56.3	192.1	23.9	2.8	1.3	9.5	276.1
December	57.6	225.6	23.5	2.9	1.3	12.7	300.3
2003							
March	62.8	255.8	24.0	3.0	1.3	15.3	326.0

(a) For more information refer to paragraph 4 of the Explanatory Notes.

NUMBER OF LIVESTOCK SLAUGHTERED(a), Sheep: All Series

	<i>New South Wales</i>	<i>Victoria</i>	<i>Queensland</i>	<i>South Australia</i>	<i>Western Australia</i>	<i>Tasmania</i>	<i>Australia</i>
<i>Quarter</i>	'000	'000	'000	'000	'000	'000	'000
ORIGINAL							
2001							
December	1 496.0	1 080.6	305.0	338.4	567.9	74.8	3 862.6
2002							
March	1 450.1	1 074.1	334.3	396.7	538.4	74.0	3 867.6
June	1 323.0	814.5	366.5	333.8	317.7	78.6	3 234.1
September	1 594.5	876.7	345.0	429.2	394.3	53.0	3 692.6
December	1 636.0	1 111.9	300.7	463.5	496.3	70.4	4 078.8
2003							
March	1 236.8	1 009.9	269.3	359.2	590.8	148.6	3 614.5
SEASONALLY ADJUSTED							
2001							
December	1 458.1	970.2	317.4	301.4	487.4	73.8	3 621.2
2002							
March	1 365.3	930.9	327.6	328.9	458.2	54.1	3 427.0
June	1 384.8	908.1	384.6	355.5	404.9	75.6	3 519.9
September	1 661.3	1 044.4	322.4	583.1	452.7	90.5	4 154.8
December	1 597.1	1 000.5	313.6	412.9	425.4	69.7	3 830.4
2003							
March	1 165.3	876.1	264.3	298.9	501.7	108.7	3 204.5
TREND ESTIMATES							
2001							
December	1 429.9	970.0	323.9	318.2	506.5	68.3	3 618.7
2002							
March	1 400.2	929.3	336.0	336.2	454.4	67.7	3 515.5
June	1 482.7	959.5	353.1	417.5	422.5	70.8	3 698.3
September	1 542.4	985.2	337.4	460.5	431.5	79.4	3 838.2
December	1 491.3	975.6	306.1	431.0	452.1	88.0	3 748.0
2003							
March	1 352.8	936.8	271.5	360.4	480.3	95.3	3 494.6

(a) For more information refer to paragraph 4 of the Explanatory Notes.

NUMBER OF LIVESTOCK SLAUGHTERED(a), Lambs: All Series

	<i>New South Wales</i>	<i>Victoria</i>	<i>Queensland</i>	<i>South Australia</i>	<i>Western Australia</i>	<i>Tasmania</i>	<i>Australia</i>
<i>Quarter</i>	'000	'000	'000	'000	'000	'000	'000
ORIGINAL							
2001							
December	1 141.8	1 917.0	151.9	822.4	546.9	100.9	4 680.7
2002							
March	1 170.2	1 688.6	113.0	767.8	420.6	97.0	4 257.1
June	1 163.2	1 717.2	104.8	775.4	478.6	110.6	4 349.9
September	1 145.0	1 688.3	111.9	558.9	437.1	98.9	4 040.0
December	1 103.8	1 891.1	71.2	734.6	547.2	91.0	4 438.8
2003							
March	1 102.5	1 685.8	81.8	820.1	521.8	95.7	4 307.7
SEASONALLY ADJUSTED							
2001							
December	1 151.4	1 792.2	164.8	821.1	485.4	109.1	4 538.5
2002							
March	1 227.0	1 734.4	116.3	792.9	459.0	87.0	4 405.7
June	1 162.7	1 783.8	104.4	721.0	479.4	109.4	4 390.2
September	1 084.8	1 695.0	101.3	583.0	456.1	104.0	3 982.0
December	1 114.1	1 771.1	77.4	734.6	485.9	98.5	4 309.7
2003							
March	1 155.6	1 715.9	84.3	847.7	568.6	85.9	4 459.5
TREND ESTIMATES							
2001							
December	1 140.8	1 745.0	171.5	752.8	455.2	107.7	4 370.9
2002							
March	1 183.1	1 742.4	126.6	766.0	469.2	102.2	4 391.3
June	1 163.6	1 752.8	102.5	708.3	465.1	101.0	4 294.3
September	1 123.0	1 739.9	93.7	673.1	472.5	102.3	4 201.6
December	1 114.7	1 735.6	86.2	718.4	501.6	97.8	4 256.4
2003							
March	1 131.4	1 729.1	80.2	794.9	534.4	90.1	4 356.6

(a) For more information refer to paragraph 4 of the Explanatory Notes.

NUMBER OF LIVESTOCK SLAUGHTERED(a), Pigs: All Series

	<i>New South Wales</i>	<i>Victoria</i>	<i>Queensland</i>	<i>South Australia</i>	<i>Western Australia</i>	<i>Tasmania</i>	<i>Australia</i>
<i>Quarter</i>	'000	'000	'000	'000	'000	'000	'000
ORIGINAL							
2001							
December	465.8	281.0	277.9	139.4	140.9	14.7	1 321.6
2002							
March	452.9	242.0	275.5	180.8	143.6	11.4	1 307.6
June	492.3	252.0	313.3	224.5	164.7	13.3	1 462.0
September	473.0	258.3	307.0	220.6	166.3	12.1	1 439.5
December	470.5	261.2	280.5	208.0	158.4	13.0	1 393.7
2003							
March	441.5	242.9	317.8	220.3	171.3	11.1	1 406.9
SEASONALLY ADJUSTED							
2001							
December	463.6	281.7	277.0	152.2	146.3	15.5	1 331.7
2002							
March	472.9	252.0	287.2	173.9	147.2	12.1	1 359.4
June	487.0	242.4	297.8	208.7	154.7	12.2	1 407.7
September	459.8	258.7	310.8	229.8	167.4	12.0	1 433.4
December	466.2	258.2	281.6	225.5	165.1	13.8	1 396.2
2003							
March	463.4	256.3	328.7	213.7	174.7	11.6	1 471.3
TREND ESTIMATES							
2001							
December	470.1	267.8	278.5	156.2	145.5	14.0	1 333.9
2002							
March	474.4	258.7	289.6	178.7	149.5	13.0	1 370.1
June	474.8	250.9	296.1	205.6	155.8	12.3	1 397.7
September	470.2	252.5	299.5	221.7	162.8	12.4	1 416.0
December	464.6	257.1	304.3	224.8	168.7	12.6	1 430.8
2003							
March	460.8	259.7	312.1	220.7	173.5	12.5	1 447.2

(a) For more information refer to paragraph 4 of the Explanatory Notes.

NUMBER OF CHICKENS SLAUGHTERED(a): All Series

	<i>New South Wales</i>	<i>Victoria</i>	<i>Queensland</i>	<i>South Australia</i>	<i>Western Australia</i>	<i>Australia</i>
<i>Quarter</i>	'000	'000	'000	'000	'000	'000
ORIGINAL						
2001						
December	39 023.9	27 947.8	18 125.2	n.p.	n.p.	104 660.4
2002						
March	40 074.3	27 640.6	18 063.0	n.p.	n.p.	106 854.7
June	39 955.7	29 041.4	18 676.1	n.p.	n.p.	107 212.4
September	39 172.0	28 625.5	18 477.3	n.p.	n.p.	105 278.6
December	38 943.3	30 632.3	19 686.2	n.p.	n.p.	108 860.1
2003						
March	36 188.5	29 496.2	18 703.4	n.p.	n.p.	103 360.2
SEASONALLY ADJUSTED						
2001						
December	38 311.0	26 738.2	17 381.8	n.p.	n.p.	101 230.1
2002						
March	40 163.3	28 131.2	18 007.0	n.p.	n.p.	107 501.3
June	40 464.5	29 182.8	18 945.5	n.p.	n.p.	108 811.9
September	39 398.0	29 196.9	19 087.8	n.p.	n.p.	106 737.7
December	38 434.4	29 215.1	18 867.7	n.p.	n.p.	105 336.0
2003						
March	36 073.1	30 125.1	18 654.0	n.p.	n.p.	103 929.7
TREND ESTIMATES						
2001						
December	38 837.5	26 690.2	17 302.2	n.p.	n.p.	102 307.1
2002						
March	39 747.9	28 036.4	18 117.2	n.p.	n.p.	106 146.5
June	40 222.2	28 904.0	18 770.5	n.p.	n.p.	108 063.8
September	39 476.0	29 248.3	18 977.6	n.p.	n.p.	107 182.2
December	38 098.7	29 517.6	18 918.3	n.p.	n.p.	105 470.9
2003						
March	36 576.1	29 811.2	18 733.8	n.p.	n.p.	103 915.7

(a) For more information refer to paragraphs 8 and 9 of the Explanatory Notes.

NUMBER OF LIVESTOCK SLAUGHTERED(a): Original

Financial year	New South Wales '000	Victoria '000	Queensland '000	South Australia '000	Western Australia '000	Tasmania '000	Australia '000
BULLS, BULLOCKS AND STEERS							
1999-2000	755.4	710.0	1 958.2	169.5	181.5	109.0	3 892.7
2000-01	767.1	632.0	2 266.6	179.7	187.0	90.2	4 126.9
2001-02	820.5	630.6	2 150.0	182.0	137.7	80.6	4 002.4
COWS AND HEIFERS							
1999-2000	969.4	813.8	1 354.2	145.2	212.4	108.9	3 627.3
2000-01	1 060.8	891.9	1 390.1	137.0	228.4	94.2	3 813.8
2001-02	992.1	800.6	1 364.2	150.6	230.6	79.4	3 621.7
TOTAL CATTLE (excluding calves)							
1999-2000	1 724.8	1 523.8	3 312.5	314.7	393.9	217.9	7 520.0
2000-01	1 827.9	1 523.9	3 656.6	316.7	415.4	184.4	7 940.7
2001-02	1 812.6	1 431.1	3 514.1	332.6	368.3	160.0	7 624.1
CALVES							
1999-2000	211.0	678.5	141.7	17.6	10.5	62.1	1 122.1
2000-01	226.0	608.9	135.1	11.6	5.6	49.7	1 037.5
2001-02	205.7	597.0	99.7	9.6	6.0	44.6	963.3
SHEEP							
1999-2000	5 385.6	3 816.0	1 423.9	1 223.8	3 418.1	589.9	15 857.2
2000-01	5 857.6	4 193.3	1 489.2	1 488.2	3 235.0	364.7	16 628.0
2001-02	5 712.7	3 819.5	1 334.0	1 337.7	1 961.3	275.8	14 441.0
LAMBS							
1999-2000	4 059.0	7 144.5	917.6	2 634.7	2 345.0	456.3	17 557.1
2000-01	4 203.2	8 090.0	1 024.1	2 875.1	2 020.0	416.1	18 628.5
2001-02	4 558.8	6 997.4	627.6	2 933.4	1 856.6	426.4	17 400.2
PIGS							
1999-2000	1 408.2	1 443.7	1 111.2	469.2	513.9	70.1	5 024.7
2000-01	1 739.5	1 065.6	1 078.4	525.7	542.6	57.6	5 016.3
2001-02	1 885.0	1 042.1	1 133.7	690.0	591.4	53.1	5 402.4
CHICKENS							
1999-2000	139 966.7	105 889.3	68 922.0	n.p.	n.p.	n.p.	393 991.8
2000-01	151 686.8	104 080.0	68 002.0	n.p.	n.p.	n.p.	398 868.6
2001-02	156 682.0	109 311.2	70 940.6	n.p.	n.p.	n.p.	415 555.6

(a) For more information refer to paragraphs 4, 5 and 7 to 9 of the Explanatory Notes.

RED MEAT PRODUCED(a), Beef: All Series

	<i>New South Wales</i>	<i>Victoria</i>	<i>Queensland</i>	<i>South Australia</i>	<i>Western Australia</i>	<i>Tasmania</i>	<i>Australia</i>
<i>Quarter</i>	<i>tonnes</i>	<i>tonnes</i>	<i>tonnes</i>	<i>tonnes</i>	<i>tonnes</i>	<i>tonnes</i>	<i>tonnes</i>
ORIGINAL							
2001							
December	108 701	87 825	218 502	21 325	22 015	10 295	468 951
2002							
March	114 423	88 827	189 243	23 748	23 160	11 260	450 941
June	126 511	86 931	269 953	22 539	21 774	13 706	541 710
September	121 725	87 609	274 019	19 663	23 061	8 553	534 915
December	125 017	98 065	236 320	23 357	31 301	12 850	527 190
2003							
March	116 215	94 683	194 376	23 930	27 762	15 644	472 884
SEASONALLY ADJUSTED							
2001							
December	111 330	83 830	230 055	20 228	18 692	10 608	475 706
2002							
March	114 407	82 959	216 424	21 958	23 552	10 277	467 906
June	121 909	89 966	253 435	23 144	24 268	11 896	528 266
September	123 360	95 619	246 821	22 037	24 599	10 917	521 406
December	128 160	93 558	248 505	22 212	25 601	13 264	534 785
2003							
March	114 594	88 511	222 547	22 091	29 448	14 273	491 064
TREND ESTIMATES							
2001							
December	112 761	83 885	237 295	20 772	21 541	10 528	487 801
2002							
March	115 112	85 432	231 167	21 840	22 093	10 725	486 656
June	120 839	89 700	240 056	22 460	23 669	11 047	508 405
September	123 957	92 966	247 362	22 479	25 063	11 877	524 754
December	123 174	93 027	242 522	22 198	26 414	12 920	521 301
2003							
March	120 014	91 058	230 727	22 020	28 115	13 881	506 939

(a) For more information refer to paragraphs 4 to 6 of the Explanatory Notes.

RED MEAT PRODUCED(a), Veal: All Series

	<i>New South Wales</i>	<i>Victoria</i>	<i>Queensland</i>	<i>South Australia</i>	<i>Western Australia</i>	<i>Tasmania</i>	<i>Australia</i>
<i>Quarter</i>	<i>tonnes</i>	<i>tonnes</i>	<i>tonnes</i>	<i>tonnes</i>	<i>tonnes</i>	<i>tonnes</i>	<i>tonnes</i>
ORIGINAL							
2001							
December	2 471	1 713	983	57	106	133	5 475
2002							
March	3 610	899	1 289	69	82	16	5 977
June	4 072	2 742	1 315	77	71	46	8 336
September	4 228	9 076	1 063	92	84	590	15 146
December	1 749	2 590	893	76	69	138	5 526
2003							
March	6 233	1 003	1 160	85	71	30	8 594
SEASONALLY ADJUSTED							
2001							
December	2 819	3 283	1 038	74	100	227	7 279
2002							
March	3 485	4 203	1 262	72	84	164	8 414
June	3 633	3 183	1 251	70	75	151	8 453
September	4 392	3 766	1 085	78	83	196	9 761
December	1 999	5 004	941	100	64	239	7 359
2003							
March	5 994	4 682	1 137	89	73	306	12 081
TREND ESTIMATES							
2001							
December	2 991	3 387	1 184	69	100	205	7 590
2002							
March	3 448	3 555	1 207	71	89	177	8 213
June	3 571	3 703	1 179	74	79	164	8 534
September	3 572	4 001	1 109	82	75	194	8 803
December	3 866	4 473	1 043	90	72	243	9 421
2003							
March	4 539	4 895	1 033	95	69	289	10 455

(a) For more information refer to paragraphs 4 to 6 of the Explanatory Notes.

RED MEAT PRODUCED(a), Mutton: All Series

	<i>New South Wales</i>	<i>Victoria</i>	<i>Queensland</i>	<i>South Australia</i>	<i>Western Australia</i>	<i>Tasmania</i>	Australia
<i>Quarter</i>	<i>tonnes</i>	<i>tonnes</i>	<i>tonnes</i>	<i>tonnes</i>	<i>tonnes</i>	<i>tonnes</i>	<i>tonnes</i>
ORIGINAL							
2001							
December	33 543	21 675	5 720	8 221	11 516	1 500	82 174
2002							
March	30 252	20 596	6 458	8 895	10 796	1 459	78 455
June	26 557	15 324	6 800	6 936	6 255	1 505	63 379
September	33 082	16 277	6 185	9 351	7 912	1 011	73 819
December	32 791	21 198	5 662	10 073	9 981	1 371	81 076
2003							
March	24 143	18 676	4 623	7 521	11 740	2 885	69 589
SEASONALLY ADJUSTED							
2001							
December	31 885	19 145	5 847	7 005	9 788	1 483	75 342
2002							
March	28 931	18 162	6 258	7 467	9 247	1 088	70 194
June	28 655	17 366	7 394	7 823	8 063	1 382	70 922
September	33 779	19 000	5 759	12 420	9 034	1 800	83 213
December	31 228	18 777	5 802	8 578	8 474	1 359	73 538
2003							
March	23 109	16 488	4 485	6 343	10 033	2 153	63 086
TREND ESTIMATES							
2001							
December	30 864	19 035	5 996	7 341	10 219	1 366	75 102
2002							
March	29 815	18 055	6 331	7 593	9 125	1 329	72 217
June	30 696	18 182	6 682	9 121	8 447	1 359	74 560
September	31 146	18 353	6 243	9 830	8 608	1 537	76 109
December	29 624	18 134	5 495	9 079	9 017	1 729	73 414
2003							
March	26 524	17 516	4 761	7 532	9 557	1 881	67 871

(a) For more information refer to paragraphs 4 to 6 of the Explanatory Notes.

RED MEAT PRODUCED(a), Lamb: All Series

	<i>New South Wales</i>	<i>Victoria</i>	<i>Queensland</i>	<i>South Australia</i>	<i>Western Australia</i>	<i>Tasmania</i>	<i>Australia</i>
<i>Quarter</i>	<i>tonnes</i>	<i>tonnes</i>	<i>tonnes</i>	<i>tonnes</i>	<i>tonnes</i>	<i>tonnes</i>	<i>tonnes</i>
ORIGINAL							
2001							
December	22 656	36 784	2 878	17 627	10 480	1 981	92 407
2002							
March	23 506	33 065	2 093	17 232	8 178	1 922	85 996
June	23 514	33 997	2 024	17 732	9 366	2 209	88 842
September	22 126	31 844	2 076	11 493	8 326	1 996	77 861
December	21 230	35 157	1 294	14 864	10 581	1 817	84 944
2003							
March	21 559	32 005	1 474	17 947	10 365	1 871	85 222
SEASONALLY ADJUSTED							
2001							
December	22 906	34 911	3 089	17 844	9 336	2 200	90 082
2002							
March	24 616	33 740	2 204	17 485	8 907	1 753	88 078
June	23 496	35 339	2 024	16 239	9 282	2 150	90 916
September	20 947	31 578	1 846	12 240	8 763	2 049	76 134
December	21 483	33 405	1 413	15 063	9 431	2 013	82 937
2003							
March	22 568	32 709	1 531	18 232	11 271	1 708	87 266
TREND ESTIMATES							
2001							
December	22 844	33 933	3 239	16 344	8 712	2 141	86 970
2002							
March	23 758	34 053	2 394	16 959	9 074	2 041	88 399
June	23 150	33 962	1 941	15 559	8 991	2 008	86 139
September	22 016	33 171	1 745	14 389	9 137	2 035	82 643
December	21 606	32 774	1 574	15 090	9 775	1 958	82 415
2003							
March	21 876	32 639	1 445	16 613	10 510	1 815	84 111

(a) For more information refer to paragraphs 4 to 6 of the Explanatory Notes.

RED MEAT PRODUCED(a), Pig Meat: All Series

	<i>New South Wales</i>	<i>Victoria</i>	<i>Queensland</i>	<i>South Australia</i>	<i>Western Australia</i>	<i>Tasmania</i>	<i>Australia</i>
<i>Quarter</i>	<i>tonnes</i>	<i>tonnes</i>	<i>tonnes</i>	<i>tonnes</i>	<i>tonnes</i>	<i>tonnes</i>	<i>tonnes</i>
ORIGINAL							
2001							
December	35 263	19 425	20 798	9 754	9 212	868	95 401
2002							
March	33 973	17 016	20 384	12 583	9 670	674	94 360
June	37 888	17 630	24 194	15 718	11 267	773	107 563
September	35 465	18 302	23 922	15 531	11 311	701	105 343
December	35 048	17 961	20 743	14 865	10 557	730	100 008
2003							
March	33 017	16 750	24 247	16 805	11 563	626	103 104
SEASONALLY ADJUSTED							
2001							
December	35 391	19 700	21 213	10 716	9 632	924	97 329
2002							
March	35 635	17 751	21 510	12 455	10 119	722	99 441
June	36 785	16 877	22 554	14 355	10 642	693	101 593
September	34 750	18 392	23 946	15 805	11 001	692	104 116
December	35 216	17 826	21 152	16 344	11 112	778	102 043
2003							
March	34 617	17 828	25 597	16 607	12 027	669	108 614
TREND ESTIMATES							
2001							
December	35 934	18 902	21 090	11 051	9 787	837	97 716
2002							
March	35 945	18 146	21 993	12 519	10 130	765	99 860
June	35 833	17 593	22 433	14 224	10 536	713	101 334
September	35 493	17 696	22 789	15 546	10 947	707	102 899
December	34 990	17 936	23 306	16 324	11 356	719	104 609
2003							
March	34 553	18 028	24 008	16 723	11 770	713	106 550

(a) For more information refer to paragraphs 4 to 6 of the Explanatory Notes.

TOTAL RED MEAT PRODUCED(a): All Series

	<i>New South Wales</i>	<i>Victoria</i>	<i>Queensland</i>	<i>South Australia</i>	<i>Western Australia</i>	<i>Tasmania</i>	<i>Australia</i>
<i>Quarter</i>	<i>tonnes</i>	<i>tonnes</i>	<i>tonnes</i>	<i>tonnes</i>	<i>tonnes</i>	<i>tonnes</i>	<i>tonnes</i>
ORIGINAL							
2001							
December	202 632	167 422	248 880	56 984	53 329	14 777	744 408
2002							
March	205 765	160 402	219 466	62 526	51 885	15 331	715 729
June	218 544	156 625	304 287	63 002	48 733	18 239	809 830
September	216 626	163 108	307 264	56 131	50 694	12 852	807 084
December	215 835	174 970	264 912	63 235	62 490	16 905	798 744
2003							
March	201 167	163 116	225 880	66 288	61 502	21 057	739 394
SEASONALLY ADJUSTED							
2001							
December	204 331	160 869	261 242	55 867	47 548	15 442	745 738
2002							
March	207 074	156 815	247 658	59 437	51 909	14 004	734 033
June	214 478	162 731	286 658	61 631	52 330	16 272	800 150
September	217 228	168 355	279 457	62 580	53 480	15 654	794 630
December	218 086	168 570	277 813	62 297	54 682	17 653	800 662
2003							
March	200 882	160 218	255 297	63 362	62 852	19 109	762 111
TREND ESTIMATES							
2001							
December	205 394	159 142	268 804	55 577	50 359	15 077	755 179
2002							
March	208 078	159 241	263 092	58 982	50 511	15 037	755 345
June	214 089	163 140	272 291	61 438	51 722	15 291	778 972
September	216 184	166 187	279 248	62 326	53 830	16 350	795 208
December	213 260	166 344	273 940	62 781	56 634	17 569	791 160
2003							
March	207 506	164 136	261 974	62 983	60 021	18 579	775 926

(a) For more information refer to paragraphs 4 to 6 of the Explanatory Notes.

CHICKEN MEAT PRODUCED(a): All Series

	<i>New South Wales</i>	<i>Victoria</i>	<i>Queensland</i>	<i>South Australia</i>	<i>Western Australia</i>	<i>Australia</i>
<i>Quarter</i>	<i>tonnes</i>	<i>tonnes</i>	<i>tonnes</i>	<i>tonnes</i>	<i>tonnes</i>	<i>tonnes</i>
ORIGINAL						
2001						
December	67 103	45 297	25 427	n.p.	n.p.	166 416
2002						
March	69 398	45 410	24 890	n.p.	n.p.	169 187
June	71 110	49 116	26 886	n.p.	n.p.	176 257
September	69 583	49 518	28 299	n.p.	n.p.	175 634
December	65 052	54 613	29 584	n.p.	n.p.	178 450
2003						
March	62 927	51 239	28 540	n.p.	n.p.	171 463
SEASONALLY ADJUSTED						
2001						
December	65 897	43 363	24 254	n.p.	n.p.	161 053
2002						
March	69 870	46 202	25 271	n.p.	n.p.	171 851
June	71 459	48 788	27 057	n.p.	n.p.	176 994
September	70 067	51 235	29 088	n.p.	n.p.	178 091
December	64 016	52 263	28 191	n.p.	n.p.	172 837
2003						
March	63 214	52 187	29 009	n.p.	n.p.	173 925
TREND ESTIMATES						
2001						
December	67 656	43 855	23 949	n.p.	n.p.	163 674
2002						
March	69 670	46 005	25 549	n.p.	n.p.	170 674
June	70 575	48 799	27 171	n.p.	n.p.	175 886
September	68 863	50 814	28 207	n.p.	n.p.	176 568
December	65 760	52 009	28 754	n.p.	n.p.	175 001
2003						
March	62 839	52 658	28 964	n.p.	n.p.	173 326

(a) For more information refer to paragraphs 8 and 9 of the Explanatory Notes.

MEAT PRODUCED(a): Original

<i>Financial year</i>	<i>New South Wales</i> tonnes	<i>Victoria</i> tonnes	<i>Queensland</i> tonnes	<i>South Australia</i> tonnes	<i>Western Australia</i> tonnes	<i>Tasmania</i> tonnes	<i>Australia</i> tonnes
BEEF							
1999-2000	431 983	351 273	932 053	78 001	94 973	57 557	1 952 321
2000-01	461 380	354 819	1 034 624	82 533	100 524	48 771	2 085 952
2001-02	460 964	342 898	972 749	85 882	88 593	43 923	1 996 167
VEAL							
1999-2000	13 044	13 370	6 550	471	859	1 236	35 581
2000-01	14 214	11 842	5 684	307	382	996	33 474
2001-02	12 992	11 998	4 852	278	377	899	31 446
MUTTON							
1999-2000	118 947	76 719	27 704	28 969	69 077	11 796	333 212
2000-01	126 838	84 016	28 401	36 103	64 936	7 232	347 526
2001-02	121 844	74 425	24 801	30 342	39 481	5 416	296 308
LAMB							
1999-2000	80 016	140 215	17 456	56 667	44 136	8 833	347 323
2000-01	82 907	157 898	19 648	61 893	37 070	8 014	367 430
2001-02	91 401	136 325	11 851	64 285	35 618	8 466	347 947
PIG MEAT							
1999-2000	103 234	106 690	82 037	31 927	34 201	4 403	362 855
2000-01	130 371	78 954	78 500	36 679	36 781	3 583	365 168
2001-02	144 146	73 652	85 940	48 329	39 996	3 159	395 534
TOTAL RED MEAT							
1999-2000	747 224	688 266	1 065 801	196 036	243 247	83 825	3 031 291
2000-01	815 710	687 529	1 166 857	217 514	239 693	68 596	3 199 550
2001-02	831 347	639 298	1 100 193	229 116	204 065	61 863	3 067 401
CHICKEN MEAT							
1999-2000	221 245	170 123	95 387	n.p.	n.p.	n.p.	597 680
2000-01	244 302	175 773	93 863	n.p.	n.p.	n.p.	619 406
2001-02	273 445	180 993	99 316	n.p.	n.p.	n.p.	667 471

(a) For more information refer to paragraphs 4 to 9 of the Explanatory Notes.

EXPORTS OF FRESH, FROZEN AND PROCESSED MEAT, Australia(a): Original

Period	FRESH, CHILLED OR FROZEN MEAT.....								PROCESSED MEAT.		
	Beef bone -in tonnes	Beef bone -out tonnes	Veal bone -in tonnes	Veal bone -out tonnes	Mutton bone -in tonnes	Mutton bone -out tonnes	Lamb bone -in tonnes	Lamb bone -out tonnes	Pork tonnes	Bacon and ham tonnes	Canned meat tonnes
1999-2000	45 508	818 667	1 555	7 395	120 946	55 499	86 551	11 064	39 227	88	13 867
2000-01	42 000	940 312	2 078	6 440	127 841	63 754	103 652	12 328	43 939	280	14 884
2001-02	34 126	892 317	2 424	7 119	113 894	52 072	104 565	13 794	58 964	122	15 724
2001											
December	9 400	217 731	640	1 598	34 090	14 171	30 480	3 439	14 188	59	3 820
2002											
March	8 683	173 928	576	777	30 606	11 812	25 134	3 827	14 586	32	3 736
June	8 954	244 051	628	1 431	22 736	13 239	26 213	3 624	15 135	17	3 993
September	10 707	233 039	971	2 254	25 439	14 136	21 865	2 989	15 779	48	4 146
December	11 119	254 385	1 145	2 195	37 957	16 765	21 772	2 789	16 392	128	3 778
2003											
March	7 468	191 147	669	850	29 510	12 495	21 340	4 062	15 469	52	3 378

(a) For more information refer to paragraphs 10 and 11 of the Explanatory Notes.

EXPORTS OF LIVE SHEEP AND CATTLE, Australia(a): Original

	<i>Number</i>	<i>Gross weight</i>	<i>Gross value</i>	<i>Unit value</i>
<i>Period</i>	'000	'000 tonnes	\$'000	\$
SHEEP				
1999-2000	4 858.6	243.3	180 345	37.12
2000-01	5 936.0	283.6	257 661	43.41
2001-02	6 443.2	318.0	391 705	60.79
2001				
December	1 995.2	95.4	119 573	59.93
2002				
March	1 660.7	85.5	103 425	62.28
June	1 120.7	59.0	75 591	67.45
September	1 357.8	64.8	97 537	71.84
December	1 884.9	91.5	125 645	66.66
2003				
March	1 632.4	72.0	115 447	70.72
CATTLE				
1999-2000	845.7	317.1	432 645	511.60
2000-01	845.8	314.3	481 827	569.66
2001-02	797.0	293.5	525 535	659.41
2001				
December	211.6	77.6	152 357	720.01
2002				
March	136.6	58.2	95 678	700.34
June	217.8	75.5	135 875	623.90
September	278.4	100.5	160 046	574.88
December	322.3	114.5	191 991	595.78
2003				
March	164.5	57.3	97 913	595.21

(a) For more information refer to paragraph 12 of the Explanatory Notes.

WHOLE MILK INTAKE, By Factories(a): All Series

	<i>New South Wales(b)</i>	<i>Victoria</i>	<i>Queensland</i>	<i>South Australia</i>	<i>Western Australia</i>	<i>Tasmania</i>	<i>Australia(c)</i>
<i>Quarter</i>	<i>ML</i>	<i>ML</i>	<i>ML</i>	<i>ML</i>	<i>ML</i>	<i>ML</i>	<i>ML</i>
ORIGINAL							
2001							
September	335	1 689	191	172	99	110	2 596
December	378	2 617	202	214	104	261	3 775
2002							
March	317	1 873	178	173	93	195	2 829
June	313	1 226	174	157	97	106	2 072
September	340	1 665	196	171	108	100	2 580
December	364	2 489	185	220	109	245	3 612
SEASONALLY ADJUSTED							
2001							
September	327	1 770	181	173	93	163	2 707
December	334	1 771	190	177	101	161	2 734
2002							
March	332	1 923	181	184	100	177	2 897
June	351	2 060	191	181	100	175	3 058
September	332	1 744	189	172	101	148	2 686
December	324	1 687	173	183	105	151	2 623
TREND ESTIMATES							
2001							
September	326	1 779	185	177	95	166	2 728
December	332	1 848	185	179	98	170	2 812
2002							
March	339	1 918	187	180	100	171	2 895
June	340	1 921	187	180	101	167	2 896
September	335	1 831	184	178	102	158	2 788
December	328	1 711	180	178	104	150	2 651

(a) For more information refer to paragraph 13 of the Explanatory Notes.

(b) New South Wales total includes Australian Capital Territory.

(c) Australian total excludes Northern Territory.

Source: Original series data from Australian Dairy Corporation.

MARKET MILK SALES, By Factories(a): All Series

Quarter	New South Wales(b)	Victoria	Queensland	South Australia	Western Australia	Tasmania	Australia(c)
	ML	ML	ML	ML	ML	ML	ML
ORIGINAL							
2001							
September	156	118	103	49	48	12	485
December	151	116	100	45	48	12	471
2002							
March	154	112	100	45	48	12	471
June	161	114	100	45	48	13	481
September	156	119	101	47	50	13	485
December	153	117	100	45	49	13	477
SEASONALLY ADJUSTED							
2001							
September	152	114	102	49	48	12	476
December	151	116	99	44	48	12	471
2002							
March	157	116	102	46	49	12	482
June	162	113	100	46	48	13	482
September	152	115	99	46	50	13	475
December	153	118	99	45	49	13	476
TREND ESTIMATES							
2001							
September	151	115	100	48	48	12	475
December	153	115	101	46	48	12	476
2002							
March	157	115	101	45	48	12	478
June	158	115	100	45	49	13	479
September	156	115	100	46	49	13	478
December	153	116	99	45	50	13	475

(a) For more information refer to paragraph 13 of the Explanatory Notes.

(b) New South Wales total includes Australian Capital Territory.

(c) Australian total excludes Northern Territory.

Source: Original series data from Australian Dairy Corporation.

BROKERS AND DEALERS RECEIVALS OF TAXABLE WOOL(a): All Series

	<i>New South Wales</i>	<i>Victoria</i>	<i>Queensland</i>	<i>South Australia</i>	<i>Western Australia</i>	<i>Tasmania</i>	<i>Australia</i>	<i>% of total received by brokers</i>
<i>Quarter</i>	<i>tonnes</i>	<i>tonnes</i>	<i>tonnes</i>	<i>tonnes</i>	<i>tonnes</i>	<i>tonnes</i>	<i>tonnes</i>	<i>%</i>
ORIGINAL								
2001								
December	44 304	45 778	4 852	24 445	26 675	4 937	150 990	79.4
2002								
March	36 307	35 103	6 450	22 041	34 034	3 736	137 669	81.4
June	31 557	24 921	8 145	13 927	15 661	3 306	97 519	82.1
September	59 548	36 698	5 156	22 009	27 502	4 393	155 305	79.2
December	52 261	45 632	3 906	22 074	32 206	4 908	160 987	74.8
2003								
March	33 611	27 076	3 367	12 383	33 489	2 673	112 600	76.8
SEASONALLY ADJUSTED								
2001								
December	38 895	31 395	7 411	20 806	24 575	3 475	126 557	..
2002								
March	40 842	42 761	7 443	25 344	29 185	5 488	151 061	..
June	40 084	38 120	6 854	17 903	23 885	4 382	131 229	..
September	50 806	34 553	4 008	18 559	25 047	3 913	136 887	..
December	45 417	31 702	5 963	19 100	29 703	3 450	135 334	..
2003								
March	37 943	32 584	3 886	13 724	28 655	3 790	120 581	..
TREND ESTIMATES								
2001								
December	40 108	35 580	7 891	21 628	25 586	3 532	134 324	..
2002								
March	40 321	38 093	7 032	21 585	25 924	4 207	137 162	..
June	43 615	38 211	6 261	20 686	25 861	4 405	139 039	..
September	45 832	35 429	5 432	18 718	26 336	3 992	135 738	..
December	44 762	32 645	4 783	17 014	27 695	3 676	130 576	..
2003								
March	41 928	31 819	4 372	15 972	29 279	3 618	126 990	..

(a) For more information refer to paragraphs 14 and 15 of the Explanatory Notes.

LIVESTOCK PRODUCTS(a): Original

Financial year	New South Wales	Victoria	Queensland	South Australia	Western Australia	Tasmania	Australia
----------------	-----------------	----------	------------	-----------------	-------------------	----------	-----------

WHOLE MILK INTAKE BY FACTORIES (ML)(b)

1999-2000	1 395	6 870	848	714	412	609	10 847
2000-01	1 326	6 777	760	699	393	590	10 545
2001-02	1 343	7 405	744	715	393	672	11 271

MARKET MILK SALES BY FACTORIES (ML)(b)(c)

1999-2000	597	440	383	185	190	48	1 842
2000-01	630	455	393	199	192	50	1 920
2001-02	621	459	402	184	192	50	1 908

BROKERS AND DEALERS RECEIVALS OF TAXABLE WOOL (Tonnes)

1999-2000	190 398	152 890	45 661	91 795	143 445	17 331	641 520
2000-01	182 882	148 333	40 723	89 739	115 475	12 709	589 861
2001-02	163 926	142 338	30 188	83 144	103 028	14 268	536 891

(a) For more information refer to paragraph 13 to 15 of the Explanatory Notes.

(b) New South Wales includes Australian Capital Territory. Australian total excludes Northern Territory.

(c) Prior to 2000-01, interstate transfers of UHT milk were excluded from these figures. From 2000-01 onwards, interstate transfers of UHT milk have been included in their state of destination.

Source: Original series data from Australian Dairy Corporation.

WHAT IF...? REVISIONS TO TREND ESTIMATES

EFFECT OF NEW SEASONALLY ADJUSTED ESTIMATES ON TREND ESTIMATES

Each time new seasonally adjusted estimates become available, trend estimates are revised (see paragraphs 20 and 21 of the Explanatory Notes).

TREND REVISIONS

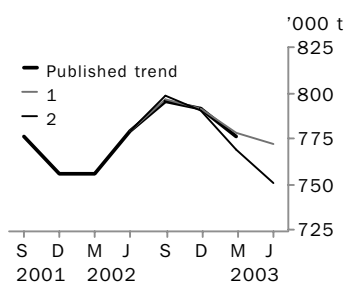
The graphs and tables which follow present the effect of two possible new seasonally adjusted estimates on the previous trend estimates:

1 The June Quarter 2003 seasonally adjusted estimate is higher than the March Quarter 2003 estimate by the percentage shown.

2 The June Quarter 2003 seasonally adjusted estimate is lower than the March Quarter 2003 estimate by the percentage shown.

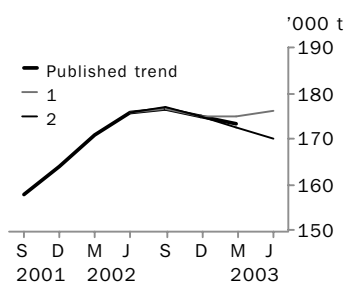
These percentages were chosen because they represent the average absolute quarterly percentage change for these series over the last ten years.

RED MEAT PRODUCTION



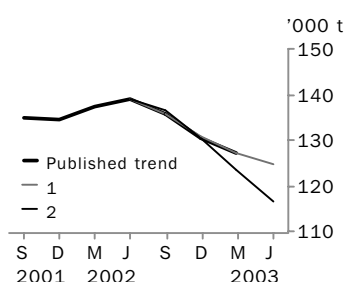
	TREND AS PUBLISHED		WHAT IF NEXT QUARTER'S SEASONALLY ADJUSTED ESTIMATE:			
	number	% change	1 <i>rises by 3% on Mar Qtr 2003</i>	2 <i>falls by 3% on Mar Qtr 2003</i>	number	% change
Mar Qtr 2002	755 345	0.0	755 345	0.0	755 345	0.0
Jun Qtr 2002	778 972	3.1	778 973	3.1	778 973	3.1
Sep Qtr 2002	795 208	2.1	796 350	2.2	798 320	2.5
Dec Qtr 2002	791 160	-0.5	790 867	-0.7	790 109	-1.0
Mar Qtr 2003	775 926	-1.9	778 401	-1.6	768 880	-2.7
Jun Qtr 2003	—	—	771 698	-0.9	750 554	-2.4

CHICKEN MEAT PRODUCTION



	TREND AS PUBLISHED		WHAT IF NEXT QUARTER'S SEASONALLY ADJUSTED ESTIMATE:			
	number	% change	1 <i>rises by 4% on Mar Qtr 2003</i>	2 <i>falls by 4% on Mar Qtr 2003</i>	number	% change
Mar Qtr 2002	170 674	4.3	170 674	4.3	170 674	4.3
Jun Qtr 2002	175 886	3.1	175 885	3.1	175 885	3.1
Sep Qtr 2002	176 568	0.4	176 594	0.4	177 126	0.7
Dec Qtr 2002	175 001	-0.9	175 078	-0.9	174 893	-1.3
Mar Qtr 2003	173 326	-1.0	175 005	0.0	172 450	-1.4
Jun Qtr 2003	—	—	176 173	0.7	170 112	-1.4

WOOL RECEIVALS



	TREND AS PUBLISHED		WHAT IF NEXT QUARTER'S SEASONALLY ADJUSTED ESTIMATE:			
	number	% change	1 <i>rises by 9% on Mar Qtr 2003</i>	2 <i>falls by 9% on Mar Qtr 2003</i>	number	% change
Mar Qtr 2002	137 162	2.1	137 162	2.1	137 162	2.1
Jun Qtr 2002	139 039	1.4	139 039	1.4	139 039	1.4
Sep Qtr 2002	135 738	-2.4	135 767	-2.4	136 560	-1.8
Dec Qtr 2002	130 576	-3.8	130 660	-3.8	130 315	-4.6
Mar Qtr 2003	126 990	-2.7	127 327	-2.6	123 470	-5.3
Jun Qtr 2003	—	—	124 513	-2.2	116 512	-5.6

WHAT IF...? REVISIONS TO TREND ESTIMATES

EFFECT OF NEW SEASONALLY ADJUSTED ESTIMATES ON TREND ESTIMATES

Readers should exercise care when interpreting trend estimates. The last three trend estimates, in particular, are likely to be revised when new seasonally adjusted estimates become available.

TREND REVISIONS

The graph and tables which follow present the effect of two possible scenarios on the previous trend estimates:

1 The March Quarter 2003 seasonally adjusted estimate is higher than the December Quarter 2002 estimate by:

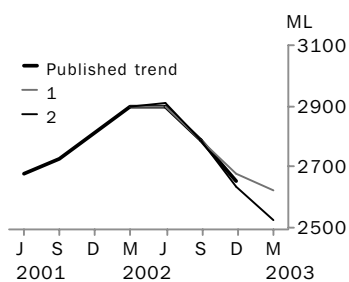
- +2% for whole milk intake by factories.

2 The March Quarter 2003 seasonally adjusted estimate is lower than the December Quarter 2002 estimate by:

- 2% for whole milk intake by factories.

These percentages were chosen because they represent the average absolute quarterly percentage change for these series over the last ten years.

WHOLE MILK INTAKE BY FACTORIES



	TREND AS PUBLISHED		WHAT IF NEXT QUARTER'S SEASONALLY ADJUSTED ESTIMATE:			
	number	% change	1 <i>rises by 2% on Dec Qtr 2002</i>		2 <i>falls by 2% on Dec Qtr 2002</i>	
	number	% change	number	% change	number	% change
Dec Qtr 2001	2 812	3.1	2 812	3.1	2 812	3.1
Mar Qtr 2002	2 895	3.0	2 895	3.0	2 895	3.0
Jun Qtr 2002	2 896	0.0	2 899	0.1	2 908	0.4
Sep Qtr 2002	2 788	-3.7	2 789	-3.8	2 785	-4.2
Dec Qtr 2002	2 651	-4.9	2 677	-4.0	2 634	-5.4
Mar Qtr 2003	—	—	2 620	-2.1	2 524	-4.2

EXPLANATORY NOTES

INTRODUCTION

- 1** This publication contains information on livestock slaughterings, meat production, exports of live sheep and live cattle, exports of fresh, frozen and processed meat, and whole milk intake by factories, market milk sales by factories and receivals of taxable wool by wool brokers and dealers.
- 2** The figures shown in this publication have been revised where necessary and as a consequence may not agree with similar data shown in previous publications.
- 3** Where figures have been rounded, discrepancies may occur between sums of the component items and totals.
- 4** Unless indicated otherwise, Australian totals include data for all states and both territories.

LIVESTOCK SLAUGHTERINGS AND MEAT PRODUCTION

- 5** The statistics on slaughterings for red meat production are based on a monthly collection from abattoirs and other major slaughtering establishments and include estimates of animals slaughtered on farms and by country butchers and other small slaughtering establishments.
- 6** Red meat is shown in carcass weight and excludes offal.
- 7** Care should be taken when using this information as the figures only relate to slaughterings for human consumption and do not include animals condemned, slaughtered for pet food or those killed for boiling down.
- 8** Poultry slaughterings and meat produced statistics have been compiled from returns supplied by commercial poultry slaughtering establishments and comprise boilers, fryers and roasters. Many small producers are excluded from the collection; however, the statistics represent a high level of coverage. Tasmanian, Northern Territory and Australian Capital Territory data are excluded from the Australian total.
- 9** Chicken meat is shown in dressed weight of whole birds, pieces and giblets. Some slaughterings and meat production statistics for 'Ducks and Drakes' and 'Other Fowls and Turkeys' are available by contacting the ABS on Hobart 03 6222 5974 or by writing to GPO Box 66, Hobart Tasmania 7001 (Attention: Agriculture Section).

EXPORTS OF FRESH, FROZEN AND PROCESSED MEAT

- 10** Table 20 shows exports of fresh, frozen and processed meat, excluding offal. International trade statistics are compiled by the ABS from information submitted by exporters and importers or their agents to the Australian Customs Service. Factors can be applied to beef, veal, mutton and lamb bone-out figures to derive bone-in carcass weight which, when added to bone-in figures, shows total exports in carcass weight. The factor for beef and veal is 1.5 and for mutton and lamb, 2.0. This information is sourced from Department of Agriculture, Fisheries and Forestry—Australia.
- 11** Beef also includes buffalo meat. Bacon and ham shown is the cured carcass weight of smoked or cooked bacon and ham. It also includes the stated net weight of packs of canned bacon and ham. Canned meat is shown as the canned weight and excludes canned bacon and ham.

LIVE SHEEP AND CATTLE EXPORTS

- 12** Table 21 contains statistics of the number of live sheep and cattle exported, the gross weight, gross value and unit value. The unit value is obtained by dividing the gross value by the number of animals exported. Sheep and cattle exported for breeding are excluded.

EXPLANATORY NOTES

MILK

13 Tables 2, 22, 23 and 25 contain statistics collected by the Australian Dairy Corporation (ADC). Whole milk intake by factories includes the whole milk equivalent of farm cream intake. Market milk sales includes white, flavoured, high and low fat milk and UHT milk.

WOOL RECEIVALS

14 The statistics in tables 2, 24 and 25 show the amount of taxable wool received by brokers and purchased by dealers from wool producers. It excludes wool received by brokers on which tax has already been paid by other dealers (private buyers) or brokers.

15 The information shown is on the basis of the state in which wool has actually been received and does not necessarily reflect the production of wool in that state.

SEASONAL ADJUSTMENT

16 Seasonal adjustment is a means of removing the estimated effects of normal seasonal variation from the series so that the effects of other influences can be more clearly recognised.

17 In the seasonal adjustment of the livestock estimates, account has been taken of both normal seasonal factors and 'trading-day' effects, where significant, (arising from the varying length of each quarter and the varying numbers of Sundays, Mondays, Tuesdays etc. in the quarter). Adjustments are also made for the effects of change in the date of Easter holidays, again, where significant. Seasonal adjustment does not remove from the series the effect of irregular influences (e.g. abnormal weather, industrial disputes).

18 The state component series have been seasonally adjusted independently. Therefore, the adjusted components may not add to the Australian Group totals.

19 As happens with all seasonally adjusted series, the seasonal factors are reviewed annually to take account of each additional year's data.

TREND ESTIMATES

20 A trend estimate is obtained by reducing the irregular component from the seasonally adjusted series. In this publication trend estimates are generally derived by applying a seven term Henderson moving average to the seasonally adjusted series. The seven term Henderson, (like all Henderson averages) is symmetric, but as the end of a time series is approached, asymmetric forms of the average are applied. Unlike the weights of the standard seven term Henderson moving average, the weights employed here have been tailored to suit the particular characteristics of individual series. While the asymmetric weights enable the trend to be calculated for recent quarters, it does result in revisions to the estimates for the most recent three quarters as additional observations become available. Revisions of trend estimates will also occur with revisions to the original data and re-estimation of seasonal factors.

21 Sensitivity analysis indicates the potential magnitude and direction of revisions created to the last three estimates. It aims to show how a specified movement in the seasonally adjusted data in the next period will affect the trend path of the time series. By showing how sensitive the trend estimates are to the addition of new data, the analysis provides information which can be used in the assessment of the trend's stability.

22 For further information, see *Information Paper: A Guide to Interpreting Time Series — Monitoring 'Trends', an Overview* (cat. no. 1348.0) or contact the Assistant Director, Time Series Analysis on Canberra 02 6252 6345.

EXPLANATORY NOTES

RELATED PUBLICATIONS

23 Current publications and other products released by the ABS are listed in the *Catalogue of Publications and Products* (cat. no. 1101.0). The Catalogue is available from any ABS office or the ABS web site <<http://www.abs.gov.au>>. The ABS also issues a daily Release Advice on the web site which details products to be released in the week ahead.

GENERAL ACKNOWLEDGMENT

ABS publications draw extensively on information provided freely by individuals, businesses, governments and other organisations. Their continued cooperation is very much appreciated. Without it, the wide range of statistics published by the ABS would not be available. Information received by the ABS is treated in strict confidence as required by the *Census and Statistics Act 1905*.

SYMBOLS AND OTHER USAGES

billion	thousand million
ML	million litres
n.y.a.	not yet available
n.p.	not published
t	tonnes
..	not applicable

FOR MORE INFORMATION...

- INTERNET* **www.abs.gov.au** the ABS web site is the best place to start for access to summary data from our latest publications, information about the ABS, advice about upcoming releases, our catalogue, and Australia Now—a statistical profile.
- LIBRARY* A range of ABS publications is available from public and tertiary libraries Australia-wide. Contact your nearest library to determine whether it has the ABS statistics you require, or visit our web site for a list of libraries.
- CPI INFOLINE* For current and historical Consumer Price Index data, call 1902 981 074 (call cost 77c per minute).
- DIAL-A-STATISTIC* For the latest figures for National Accounts, Balance of Payments, Labour Force, Average Weekly Earnings, Estimated Resident Population and the Consumer Price Index call 1900 986 400 (call cost 77c per minute).

INFORMATION SERVICE

Data which have been published and can be provided within five minutes are free of charge. Our information consultants can also help you to access the full range of ABS information—ABS user-pays services can be tailored to your needs, time frame and budget. Publications may be purchased. Specialists are on hand to help you with analytical or methodological advice.

- PHONE* **1300 135 070**
- EMAIL* **client.services@abs.gov.au**
- FAX* 1300 135 211
- POST* Client Services, ABS, GPO Box 796, Sydney 2001

WHY NOT SUBSCRIBE?

ABS subscription services provide regular, convenient and prompt deliveries of ABS publications and products as they are released. Email delivery of monthly and quarterly publications is available.

- PHONE* 1300 366 323
- EMAIL* subscriptions@abs.gov.au
- FAX* 03 9615 7848
- POST* Subscription Services, ABS, GPO Box 2796Y, Melbourne 3001



2721500003039
ISSN 0728-4047

RRP \$22.00